

Welcome! For Travel Agency

Marugame City promotion project to attract staying type tourism

Start: April 1st 2020~ ※1

Target travel group must include "Tour in Marugame" in the itinerary.

Requirement: over 20 people on one group

Overnight Trip

40,000yen per group

+

Designated accommodation ※2

Day Trip

20,000yen per group

+

Use restaurants in Marugame

+

1. Castle Tower of Marugame Castle ※3
2. Marugame Genichiro-Inokuma Museum of Contemporary Art
3. Nakazu-Banshoen Garden • The Marugame Museum of Art
4. New Reoma World
5. Shiwaku-Kinbansho (Honjima Island)
6. Kasashima District Preservation Center (Honjima Island)
7. Uchiwa paper fan museum (※experience of making Uchiwa is a necessary condition)

Tour
in Marugame



Sanuki Udon Noodle

For Competition Organizers

To support the convention, conferences, workshops, etc.

Requirement: stay in a total of 100 nights or more

Hold the convention in Marugame city

+

100,000 yen
or 200,000 yen

→

Designated accommodation ※2

For training camp, school trip Organizers

Hold the training camp, school trip in Marugame city.

Requirement: stay in a total of 50 nights or more

Hold the training camp, school trip
in Marugame city

or

+

Designated accommodation ※2

→

total number of stay
× 500yen or 1,000yen

+

Hold in Marugame city or Zentsuji,
Kotohira, Tadotsu-city, Mannou town

Sightseeing for castle tower ※3
The number of visitors × 100 yen



※1 accepting applications at any time. However, and it ends when it reaches the budget.

※2 Check our website for more information about designated accommodation in Marugame.

※3 When the fee of the castle tower is free, it's not available because we can't issue a receipt.

Marugame Castle



Marugame castle is a symbol of the city which has a long history of 420 years. It has the highest and a beautiful curved stonewall called "Ougi no Kobai" (the shape of a folding fan) and its castle tower is one of the 12 remaining original wooden towers in Japan.

[Address] Ichibancho, Marugame City, Kagawa Pref.
 [Open hours] 24hours except castle tower (Open all year round)
 Castle tower: Open 9:00 a.m. ~ 4:30 p.m. (Last admission at 4:00p.m.)
 [Admission Fee] Free except castle tower
 Castle tower/ Adults ¥ 200
 / Junior high school student or under ¥ 100
 ※20%discount for a tourist group of 20 people or more
 [Access] 10 minutes on foot from JR Marugame station
 15 minutes by car from Zentsuji Interchange or Skaide Interchange
 40 minutes by car from Takamatsu Airport
 [Free parking] 50cars/9buses (except5/2~5/5 for Castle festival)
 [Guide:]+81-(0)877-22-6278 (Marugame City Board of Education)
 ※Reservations required
 <Marugame Castle Tourist Information Center and Souvenirs shop>
 [Open hours] 9:00 a.m. ~ 4:30 p.m. (Open all year round)



"Nakazu-Banshoen Garden"

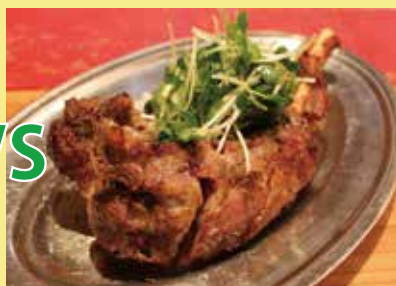


"MIMOCA"

"Honetsuki-Dori"

Marugame's originated local gourmet grilled chicken with bone. Take a big bite into it!
 You can enjoy perfect crispy and juicy meat.
 The chicken tastes spicy and it will addict you!

Hina-Dori (young chicken) vs Oya-Dori (parent chicken)



VS



Japanese Traditional Craft with
 90% Market share in Japan.

"Marugame Uchiwa Paper Fan"



You can experience
 how to make Uchiwa.
 ※Reservations required

"Uchiwa no Minato" Paper fan Museum

[Adress] 307-15, Minatomachi, Marugame-city, Kagawa pref.
 [Open] 9:30 a.m. ~ 5:00 p.m. (Last admission at 4:30 p.m.)
 [Close] Mondays
 [TEL] +81-(0)877-24-7055

Uchiwa Workshop "Take" (Within Marugame castle)

[Open] 10:00 a.m. ~ 4:30 p.m.
 [Close] Wednesdays
 [Tel] +81-(0)877-25-3882

OWARAI Rickshaw Tour



Comedian drivers make a round trip of Marugame Castle
 [Fee] 1,000 yen per person for 20min to 25min ride
 [Operation hour] 10:00 a.m. ~ 4:00 p.m. (Open all year round)
 (weekday is non regular)
 ※You can make a reservation if you don't want to miss the chance to ride
 [Inquiry] [Marugame Castle Tourist Information Center](#)
 +81-(0)877-25-3881

Rental Bicycle

You can rent a bicycle to enjoy an excursion in Marugame.
 [Rental Port] Marugame station south bicycle-parking lot
 (1 minute from Marugame station)
 [Opening hours] 7.00 a.m. ~ 7:00 p.m.(open all year round)
 [Rental fees]
 Standard Bike 200 yen~
 Electric Bike , Sports type Bike 500 yen~
 ※Personal ID is required to show when renting a bike.

